



Parks Committee Regular Meeting Agenda

Wednesday, January 7, 2026 at 6:00 PM

City Commission Chambers – 105 S. 2ND Street, Flagler Beach, FL 32136



All meeting items will be continued until meeting is complete.

1. **Call the meeting to order**
2. **Pledge of Allegiance**
3. **Approve Minutes**
 - a. December 3, 2025, Meeting Minutes
4. **New Business**
 - a. Play Equipment and Replacement Parts - Chairman Davis
 - b. Custer Park Swing Set - John Timmins
5. **Old Business**
 - a. Update on Wickline Park - Casey Ryan, CRA Director
 - b. Update on Discussion with Old Kings Elementary Regarding Tutoring - Kathleen Conrad
 - c. Update on Veterans Park - Dale Martin, City Manager
 - d. Update on City Parks Visits - Committee Members

6. **Board Comments**

7. **Public Comments**

8. **Adjournment**

RECORD REQUIRED TO APPEAL: In accordance with Florida Statute 286.0105 if you should decide to appeal any decision the Commission makes about any matter at this meeting, you will need a record of the proceedings. You are responsible for providing this record. You may hire a court reporter to make a verbatim transcript. The City is not responsible for any mechanical failure of the recording equipment. In accordance with the Americans with Disabilities Act, persons needing assistance to participate in any of these proceedings should contact the City Clerk at (386) 517-2000 ext 233 at least 72 hours prior to the meeting. The City Commission reserves the right to request that all written material be on file with the City Clerk when the agenda item is submitted.



PARKS COMMITTEE MEETING MINUTES

Wednesday, December 3, 2025 at 6:00 PM

City Commission Chambers – 105 S. 2ND Street, Flagler Beach, FL 32136

Present: Chairman Tim Davis, Vice-Chairman Edward Lansdowne, Diane Cline, John Timmins, Kathleen Conrad, Amanda Tully, City Manager Dale L. Martin, Parks and Recreation Director Tom Gillin, CRA Director Casey Ryan, and Deputy City Clerk Colleen Kuhn.

1. Call the meeting to order

Chairman Davis called the meeting to order at 5:58 p.m.

2. Pledge of Allegiance

Chairman Davis led the Pledge.

3. Meeting Minutes

a. Approval of November 5, 2025, Meeting Minutes

Vice Chairman Edward Lansdowne motioned to approve the November 5, 2025, Meeting Minutes. Kathy Conrad seconded the motion. Motion carried.

4. New Business

a. Welcome Sue Eichler

Chairman Davis welcomed Sue Eichler to the Committee.

b. Review and discussion of Ad Hoc Parks Recommendations

Chairman Davis asked if the Committee had comments or feedback on the Ad Hoc Parks recommendations. He noted he provided information on play equipment and replacement parts to the City Manager. John Timmins shared he had also done research and suggested one person speak with the play equipment company. Mr. Martin suggested an item be added to the January 2026 Committee meeting and staff could work on obtaining quotes after that. He noted the City Attorney believed that some, but not all the parks would need to be ADA accessible. The Committee talked about the new fencing and gates being installed in Palmetto Park and utilizing volunteers to assist with clearing.

Chairman Davis asked if Committee members had a chance to visit the parks. Vice Chairman Lansdowne and Diane Cline asked about group visits to the parks. Mr. Martin said due to darkness group visits may need to occur in a few months and it would have to follow Sunshine law. There was further discussion about whether the members should visit the parks as individuals or as a group. Mr. Martin suggested members take the list of information from the Ad Hoc Parks Committee, visit parks individually, and add individual recommendations to the list.

Mr. Martin said the Commission was interested in the Committee's input on a central feature for Veterans Park where the fountain is currently located. Diane Cline suggested consideration of her plan with an adjustment that the small step-up area could include a veteran memorial. Mr. Martin reminded the Committee that the Commission wanted input just for the area where the fountain currently stands. There were several options discussed including removing, repairing, or replacing the fountain, and using coquina in the area. Mr. Timmins said he liked a coquina circle and noted the fountain was low enough for the airspace. Casey Ryan, CRA Director, suggested the fountain could be full of water or native plants. Ms. Conrad said she

would like to see a raised memorial for veterans. Vice Chairman Landsdowne said improvements should be planned out and suggested adding a central memorial or fountain to anchor the Park. He emphasized that safety was important. Susan Eichler said she liked the idea of a flat area where people could see into the Park and that area could be used for holiday displays. Amanada Tully shared that in the past lifeguard chairs were decorated during the holidays which she enjoyed and many people visited. Ms. Cline said she reenvisioned the Park as an event space with planned vegetation, a stage area, and a veteran's memorial. Chairman Davis liked the idea of the fountain with nice vegetation and noted that the expense should be considered. Ms. Tully suggested the Committee consider something like the Veteran's Memorial in Palm Coast. Mr. Martin commented that the ideas would be shared with the CRAAB and the City Commission. There was discussion about the process for park improvements, funding, decision making, and timelines.

Mr. Martin said the City was preparing to place an order for equipment for Wickline Park and reviewed the process used to decide on design and equipment. He noted the plan would be presented to the Community Redevelopment Agency (CRA) Advisory Board and the CRA Board next week, with installation expected in about six months. He indicated that other improvements at Wickline Park would be discussed with the Parks Committee.

Chairman Davis said the Silver Lake Park work-out stations were overgrown and in disrepair and he did not see many people there. He suggested providing nicely maintained trails and adding shade covering over benches on the boardwalk. Ms. Cline said a fixed shade piece was only effective for a short time as the sun moved. Ms. Eichler said she was concerned about safety at this park and suggested the front be cleared so people could see in and out of the park. Mr. Martin said staff would check on a grant received for the park to ensure the City was compliant with what was required.

Mr. Martin said some people had cut down mangroves in Custer Park and that the State had investigated and sent letters to the residents. There were comments about play equipment, benches, and visibility from picnic tables.

Chairman Davis said Pal Parker was more of a preserve that had a kayak launch and a beautiful boardwalk area, but he was uncertain how often the Park was used. Mr. Martin said better parking and directional signage might be helpful.

c. Inflatable Band Shells /John Timmins

John Timmins reviewed the information he provided on Inflatable Band Shells and thought they could be used in Veterans Park and at various locations and events. He noted he had spoken with Manoj Bhoola about the possibility of using an Inflatable Band Shell and suggested the Committee continue to consider the idea. Mr. Martin said this would need to be part of a budget discussion.

d. Establish Sub-Committee for Special Recreational Events and Programs

Chairman Davis asked if anyone had input on establishing a sub-committee for special events and programs. Kathy Conrad said she thought it would be helpful and shared that she had spoken with Old Kings Elementary staff about options for tutoring students. She said school staff indicated students who lived around Wickline would benefit greatly. She suggested using space around the Wickline Center to tutor children and reviewed the school's requirements for tutoring different grade levels. Discussion about the idea ensued. There was agreement by the Committee for Ms. Conrad to continue discussions with the school and for the item to be added to the January meeting agenda. There was a lengthy discussion about special events and programs, fund raising, ideas for events, community input and involvement, and the Committee's role. Mr. Martin suggested that other members bring forward suggestions like Ms. Conrad did in lieu of creating a sub-committee.

5. Old Business

a. Update on City Commission Input and Direction for Parks Committee

Mr. Martin said there was nothing new from the Commission.

b. Committee Member Feedback on Parks Visits

Discussed during Agenda Item #4.

6. Committee Comments

Mr. Timmins asked about a timeline for adding fencing at Palmetto Park. Mr. Martin said staff would connect with Mr. Timmins when fencing was ready to be installed. The Committee discussed ideas to help prevent flood damage in the park.

Ms. Ryan shared that CRAAB meetings were held on the 2nd Monday of each month at 2:00 PM and that the CRA Board met quarterly, with the next meeting scheduled for December 11, 2025, at 4:30 p.m.

7. Public Comment

None.

8. Adjournment

Chairman motioned to adjourn the meeting at 6:58 p.m. Ms. Tully seconded the motion. Motion carried.



Staff Report

Parks Committee Regular Meeting

January 7, 2026



To: Parks Committee
From: Colleen Kuhn, Deputy City Clerk
Meeting Date: January 7, 2026
Item Name: Play Equipment and Replacement Parts - Chairman Davis

Background:

Chairman Davis provided information on equipment and replacement parts for review and discussion.

Fiscal Impact:

N/A

Staff Recommendation:

Review and discuss

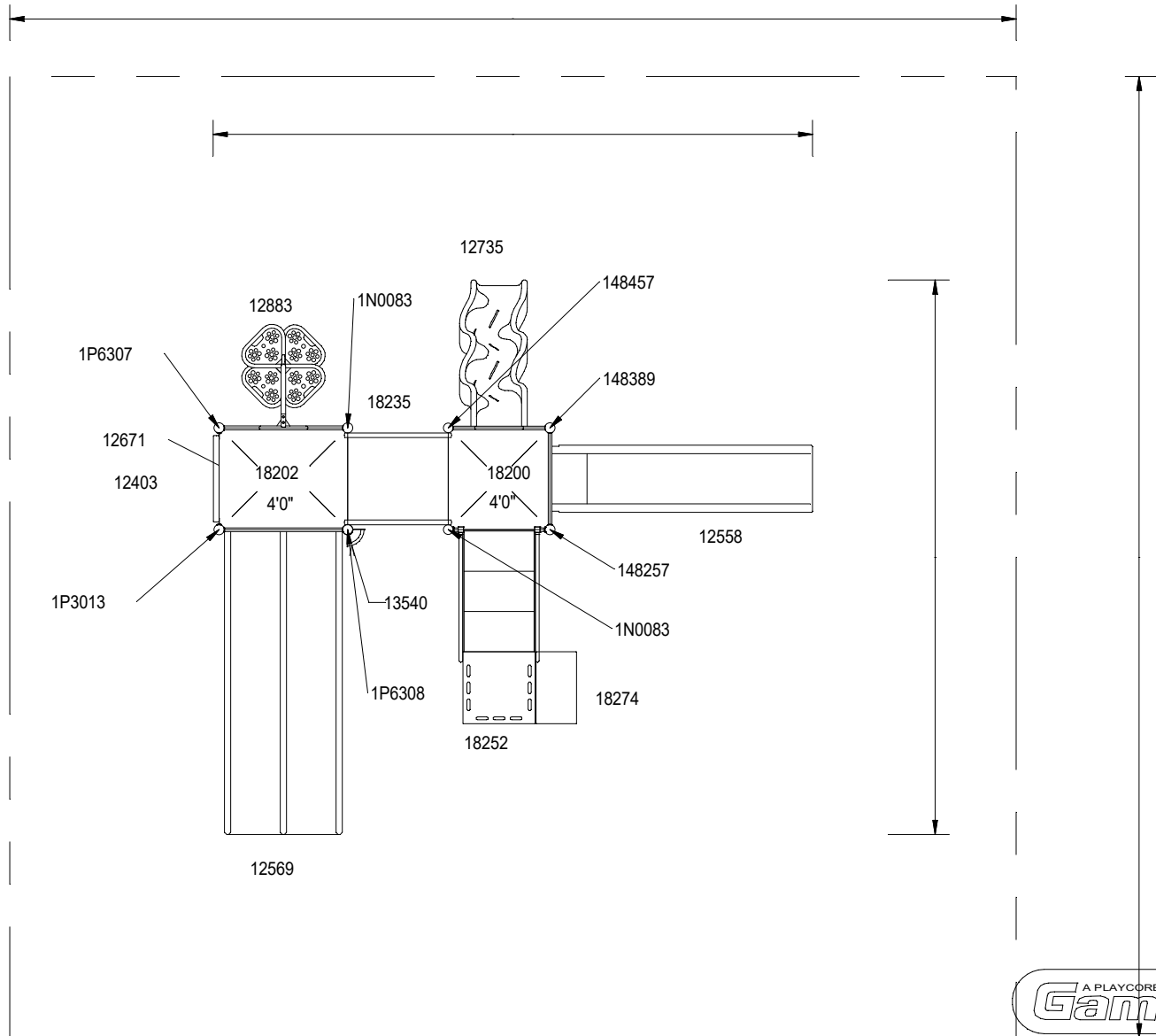
Attachments:

1. 11740 3135042 2003 - Play Equipment Item 1
2. 18377 Double Slide - Play Equipment Item 2
3. 19057 (24) Wave Climber - Play Equipment Item 3
4. 108915-01-01_Quote - Play Equipment Item 4

NOTES:

- 1) VIEW IS PLOTTED AT A SCALE OF 1"=5'.
- 2) ARROWS AT DECK CORNERS INDICATE ORIENTATION OF LABEL ON EACH UPRIGHT. SEE UPRIGHT LABEL DETAIL.
- 3) OWNER/OPERATOR SHALL INSTALL AND MAINTAIN PROTECTIVE SURFACING WITHIN THE USE ZONE (U.S.) OR PROTECTIVE SURFACING ZONE (CANADA) OF ALL PLAY EQUIPMENT TO COMPLY WITH ASTM F-1292 AND ASTM F-1487 (U.S.) OR CAN/CSA-Z-614 (CANADA)
- 4) LARGER OVERALL DIMENSIONS SHOWN REPRESENT ASTM USE ZONE AND CSA PROTECTIVE SURFACING ZONE. FOR CANADIAN INSTALLATIONS ONLY, AN ADDITIONAL 1.8m-LONG NO-ENCROACHMENT ZONE IS REQUIRED BEYOND THE PROTECTIVE SURFACING ZONE OF SLIDES, SPACE SHUTTLES AND OTHER PLAY EQUIPMENT CAUSING THE USER TO BE PROPELLED FORWARD.

EAGLET W/O ROOF
 GT ORDER NO.11740
 2003 CATALOG UNIT
 02/06/2003 CMR
 EQUIP. AGE RANGE: 2-5



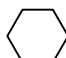

Plotted on 02-06-2003 @ 15:29 hours

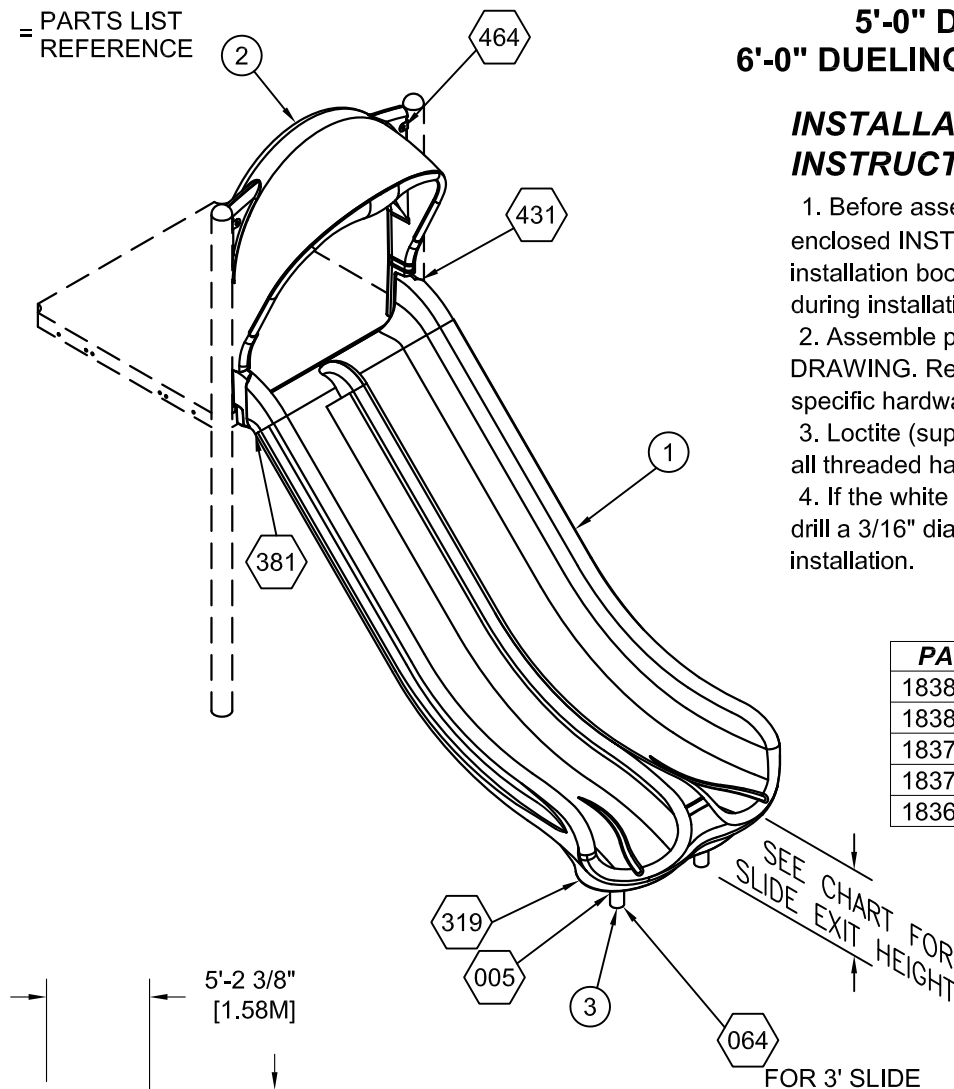


Enriching Childhood Through Play

DOUBLE ZIP SLIDE

2'-6" / 3'-0" RUMBLE & ROLL ZIP SLIDE	18389
4'-0" DOUBLE ZIP SLIDE	18377
5'-0" DOUBLE ZIP SLIDE	18378
6'-0" DUELING WAVE ZIP SLIDE	18366

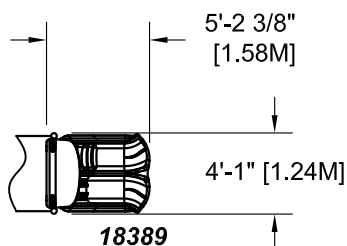
 = INSTALLATION
DETAIL
 = PARTS LIST
REFERENCE



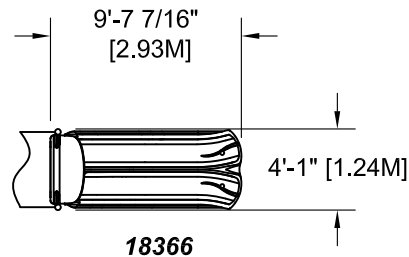
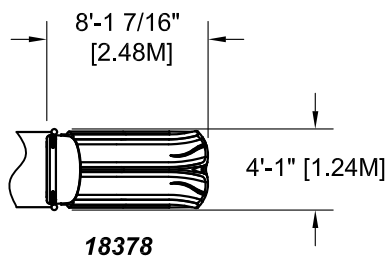
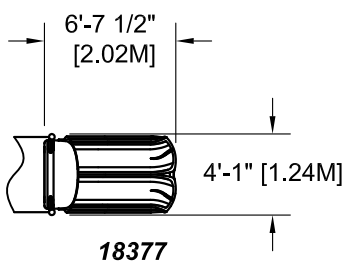
INSTALLATION INSTRUCTIONS

1. Before assembling this equipment, read the enclosed INSTALLATION INSTRUCTIONS in the installation booklet; follow all the instructions during installation.
2. Assemble parts as shown in the ASSEMBLY DRAWING. Refer to the assembly details for the specific hardware required in each connection.
3. Loctite (supplied by others) should be used on all threaded hardware.
4. If the white plug underneath slide is not drilled, drill a 3/16" diameter hole in center after installation.

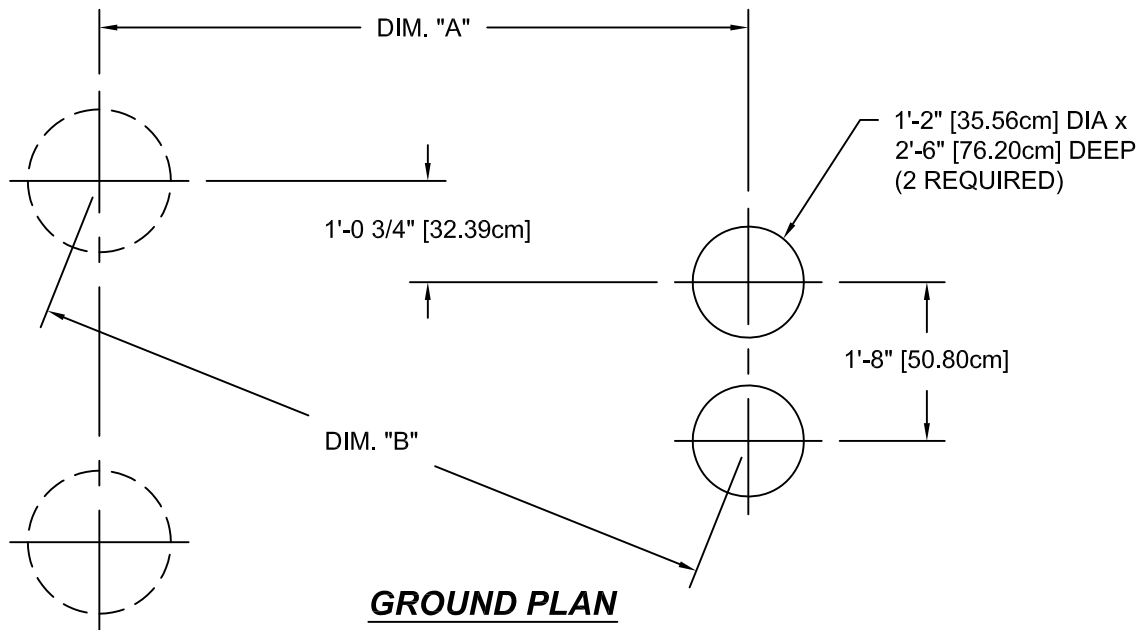
PART NO.	SLIDE EXIT HEIGHT
18389 (2'-6")	0'-4 3/4" [12.07cm]
18389 (3'-0")	0'-10 3/4" [27.31cm]
18377 (4'-0")	0'-7" [18cm]
18378 (5'-0")	0'-8 3/4" [22cm]
18366 (6'-0")	0'-11" [28cm]



**ASSEMBLY DRAWING
18366 SHOWN**



TOP VIEWS



CONCRETE REQUIRED:
.12 CUBIC YARDS
[.09 CUBIC METERS]

NOTE:
HOLE DEPTHS INDICATED ON ALL
GROUND PLANS ARE MEASURED FROM
THE FINISHED SURFACE. SEE DETAIL
005. ALL FOOTING DIMENSIONS ARE
BASED ON LEVEL FINISHED SURFACE.

PART NO.	DIM. "A"	DIM. "B"
18389	3'-11 1/8"	4'-9 7/16"
18377	5'-4 1/8"	6'-0"
18378	6'-9 1/8"	7'-4 7/16"
18366	8'-4 3/8"	8'-8 5/8"

PARTS LIST

REF NO.	DESCRIPTION	3' Rumble & Roll	4' Double Slide	5' Double Slide	6' Dueling Wave	PART NUMBER
		18389	18377	18378	18366	
1	3' Rumble & Roll Slide	1	0	0	0	176401
1	4' Double Slide	0	1	0	0	176188
1	5' Double Slide	0	0	1	0	176189
1	6' Dueling Wave Slide	0	0	0	1	176158
2	Double Hood	1	1	1	1	176177
3	Footbuck	2	2	2	0	176385
3	Footbuck	0	0	0	2	176384
	tab	2	2	2	2	169926
	Hardware Complete	1	0	0	0	176575
	Hardware Complete	0	1	1	1	176405
	3/8" x 2 3/4" B.H.C.S.	2	2	2	2	811058*
	3/8" x 2 1/2" B.H.C.S.	2	2	2	2	811057*
	3/8" x 3/4" B.H.C.S.	4	4	4	4	811052*
	3/8" Tee Nut	2	2	2	2	804556*
	3/8" Lockwasher	15	14	14	14	817334*
	3/8" Flatwasher	6	6	6	6	817410*
	3/8" Flatwasher (1 1/4" O.D.)	4	4	4	4	817424*
	3/8" Flatwasher (1" O.D.)	2	2	2	2	817401*
	3/8" x 1 1/4" B.H.C.S.	2	2	2	2	811051*
	3/8" x 1 3/4" B.H.C.S.	4	4	4	4	811054*
	3/8" x 3" Hex Head Bolt	2	0	0	0	801011*
	3/8" Hex Nut	2	0	0	0	804053*
	6" Extension	2	0	0	0	151080*

*Unless Otherwise Specified, All Units of Measure are Each
* Included in Hardware*

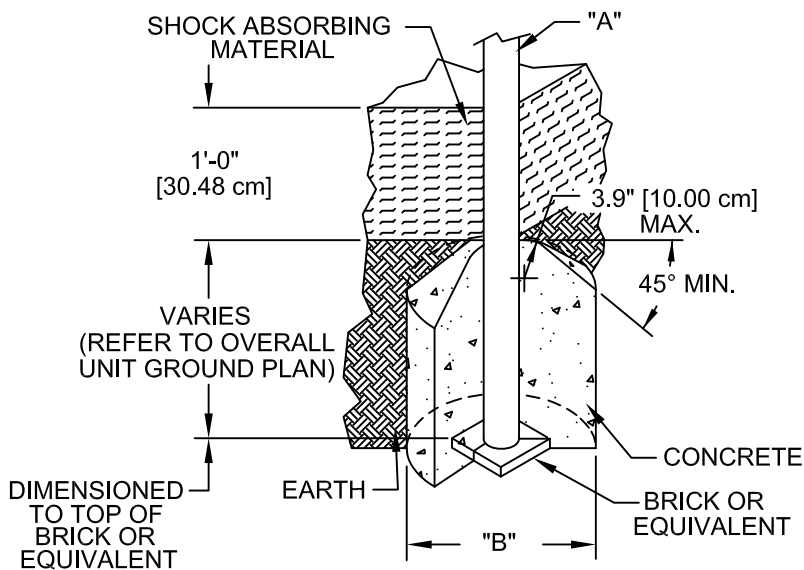
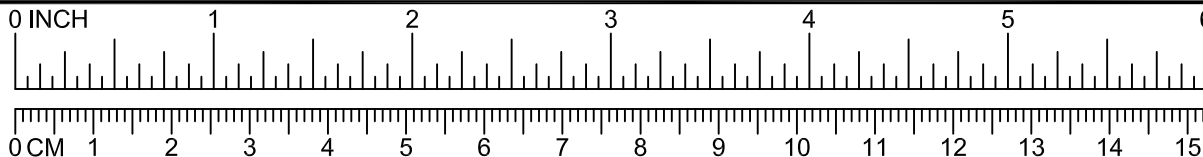
**Warning: During Installation, Hardware And Small Parts Are Choking Hazards
For Young Children. Store Unused Parts Appropriately Until Assembly Is Completed.
Once Assembly Is Completed, Remove Any Unused Parts From The Play Environment
And Dispose/Save Them In A Secure Location.**

DETAILS -for- 18366, 18377, 18378, 18389

IMPORTANT

To REDUCE THE RISK OF CLOTHING ENTANGLEMENT IN COMPLIANCE WITH ASTM F1487, ANY BOLT END PROTRUDING MORE THAN TWO FULL THREADS BEYOND THE FACE OF THE NUT SHALL BE CUT-OFF FLUSH, FILED SMOOTH AND TREATED TO PREVENT CORROSION.

NOTE: AFTER ASSEMBLY IS COMPLETE, PEEN TEE-NUTS AND FLATWASHERS TO MATCH RADIUS OF PIPE.



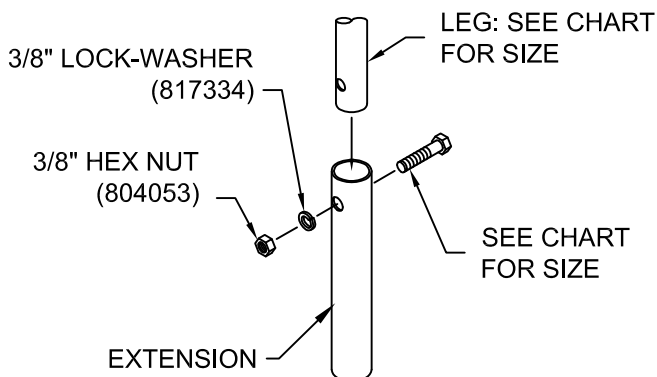
DIA. "A" (PIPE SIZE)	DIA. "B" (FOOTING SIZE)
1 1/16" [2.70 cm]	1'-2" [35.56 cm]
1 5/16" [3.33 cm]	1'-2" [35.56 cm]
1 5/8" [4.13 cm]	1'-2" [35.56 cm]
1 7/8" [4.83 cm]	1'-2" [35.56 cm]
2 3/8" [6.03 cm]	1'-2" [35.56 cm]
3 1/2" [8.89 cm]	1'-6" [45.72 cm]
ARCH SWING	
3 1/2" [8.89 cm]	2'-0" [60.96 cm]

NOTES:

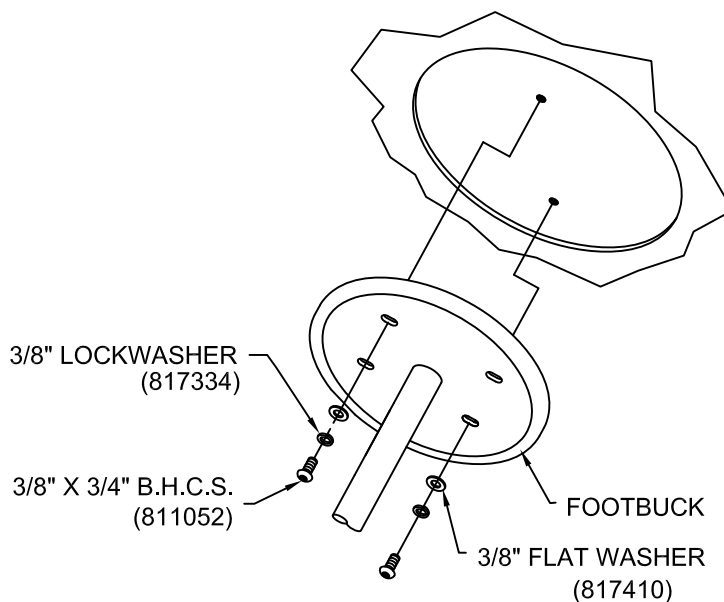
- SLOPED FOOTING IS A REQUIREMENT OF EUROPEAN STANDARD EN1176-1 ONLY
- SUGGESTED MINIMUM CONCRETE RATING: 3000 PSI



SHOCK ABSORBING PROPERTIES OF SURFACING MATERIALS VARY. IF YOU DETERMINE THAT LESS THAN 1'-0" [30.48cm] OF SURFACING IS REQUIRED, MAKE UP THE DIFFERENCE IN ELEVATION WITH EARTH, BEFORE APPLYING SURFACING.



LEG (PIPE DIA.)	BOLT REQUIRED
1 5/16" [3.3 cm]	3/8" x 2" HEX HEAD (801007)
1 5/8" [4.1 cm]	3/8" x 2 1/2" HEX HEAD (801009)
1 7/8" [6.0 cm]	3/8" x 3" HEX HEAD (801011)
2 3/8" [6.0 cm]	3/8" x 3 1/2" HEX HEAD (801013)

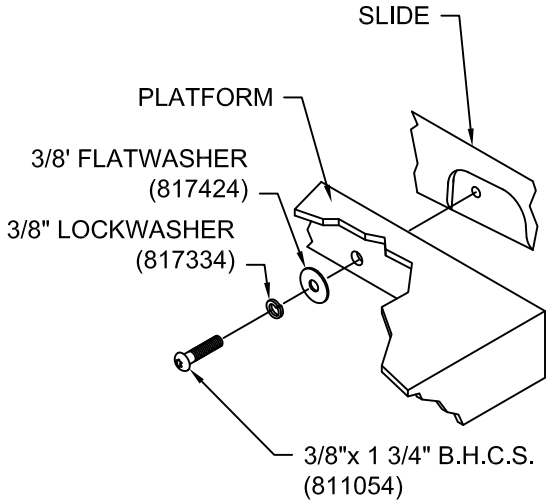
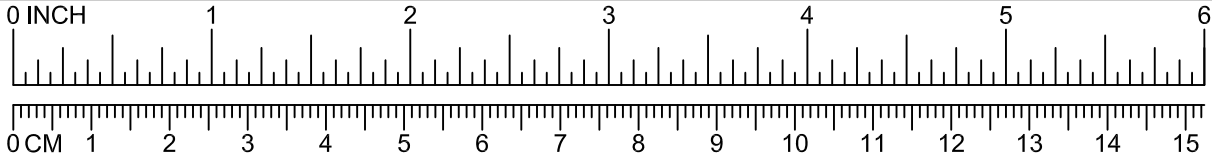


DETAILS -for- 18366, 18377, 18378, 18389

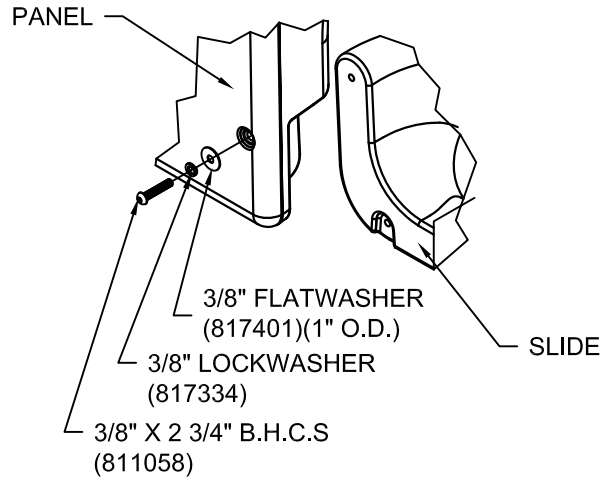
IMPORTANT

To REDUCE THE RISK OF CLOTHING ENTANGLEMENT IN COMPLIANCE WITH ASTM F1487, ANY BOLT END PROTRUDING MORE THAN TWO FULL THREADS BEYOND THE FACE OF THE NUT SHALL BE CUT-OFF FLUSH, FILED SMOOTH AND TREATED TO PREVENT CORROSION.

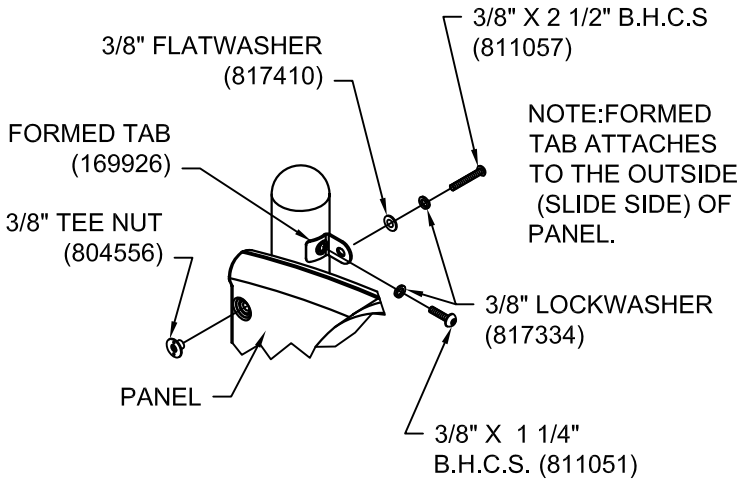
NOTE: AFTER ASSEMBLY IS COMPLETE, PEEN TEE-NUTS AND FLATWASHERS TO MATCH RADIUS OF PIPE.



381



431



464

primetime®

19057

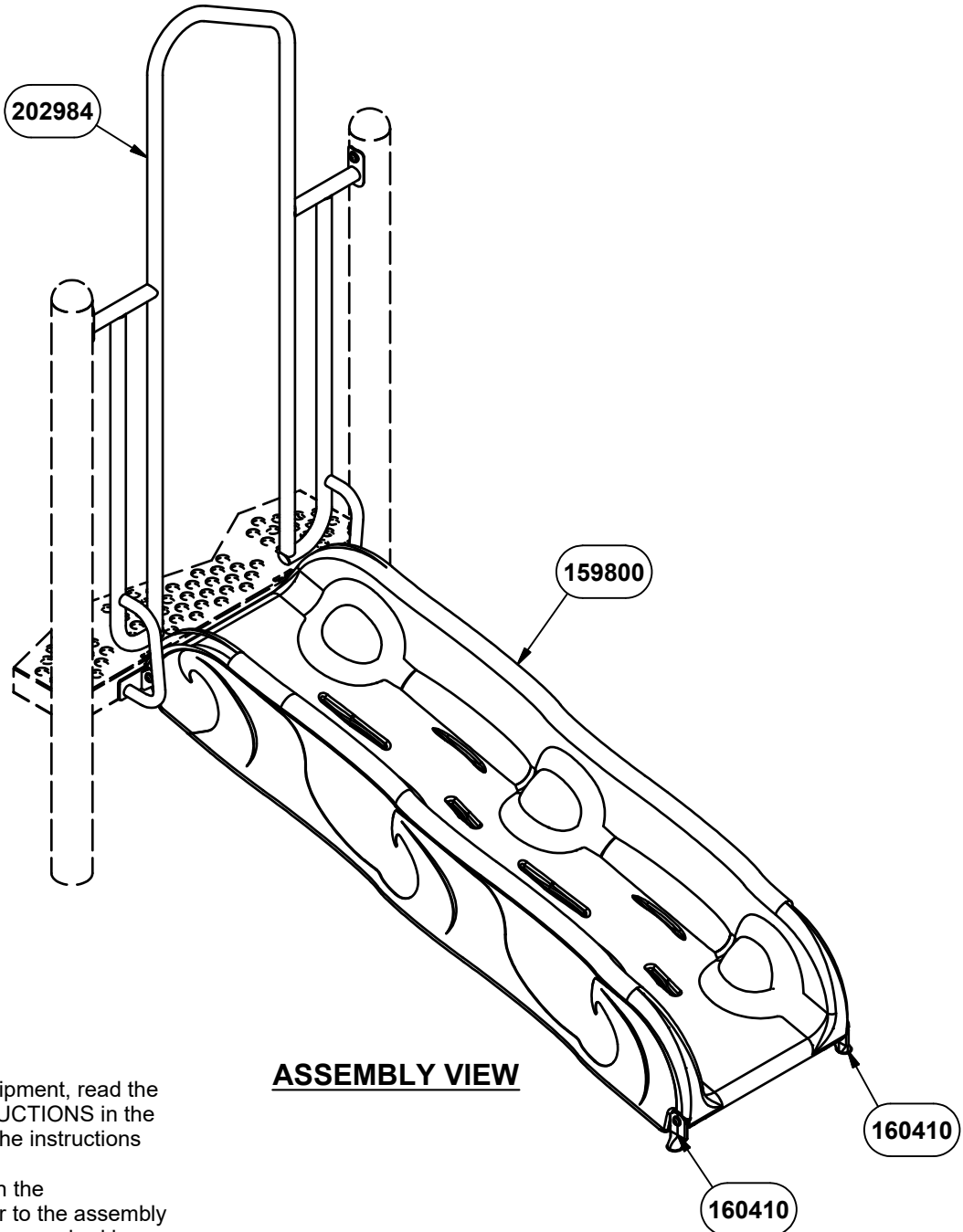
GameTime®

A PLAYCORE Company

1-800-235-2440

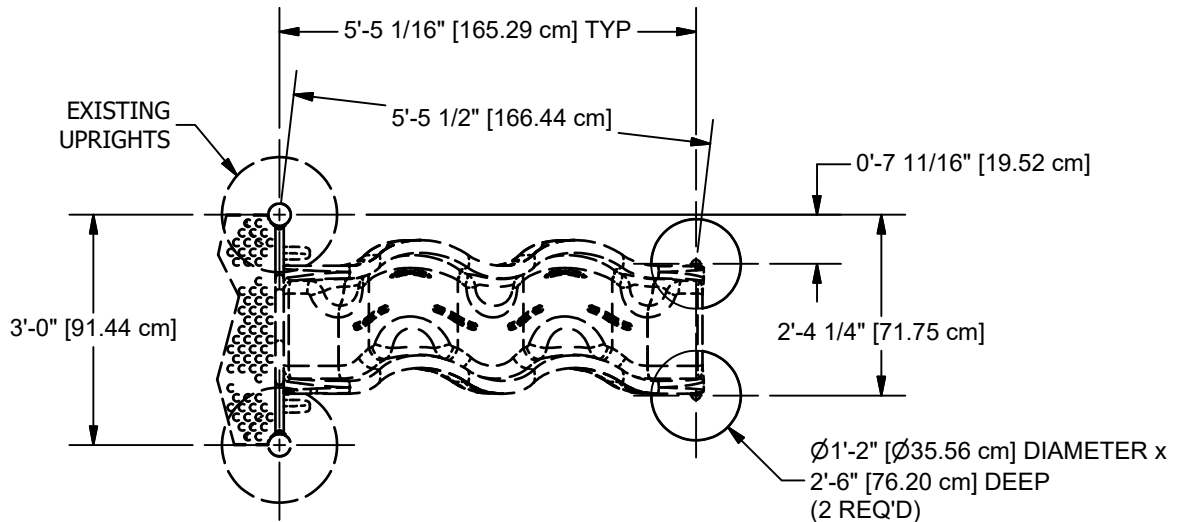
**WAVE
CLIMBER**

ISSUED/REVISED: 2/7/2024



INSTALLATION INSTRUCTIONS

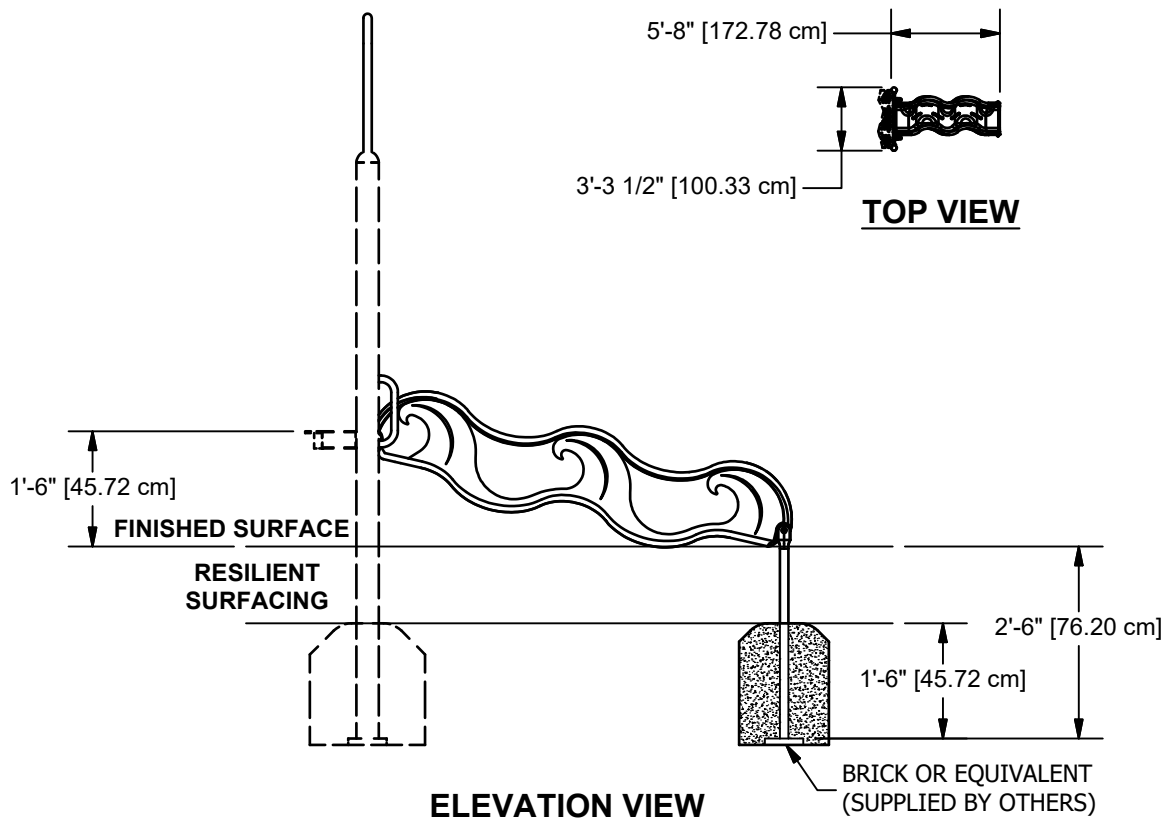
1. Before assembling this equipment, read the enclosed INSTALLER INSTRUCTIONS in the installation booklet; follow all the instructions during installation.
2. Assemble parts as shown in the ASSEMBLY DRAWING. Refer to the assembly details for the specific hardware required in each connection.
3. **LOCTITE (SUPPLIED BY OTHERS) SHOULD BE USED ON ALL THREADED HARDWARE.**
4. **DO NOT POUR CONCRETE UNTIL ENTIRE STRUCTURE IS COMPLETELY ASSEMBLED AND LEVEL.**

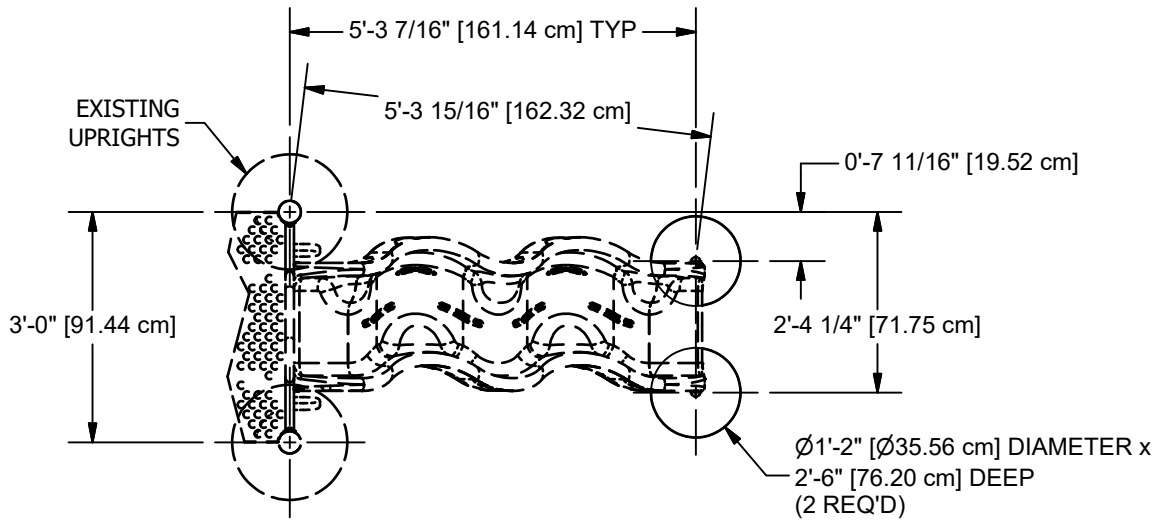


PLAN VIEW

NOTE: HOLE DEPTHS INDICATED ON ALL PLAN VIEWS ARE MEASURED FROM THE FINISHED SURFACE. SEE ELEVATION VIEW. ALL FOOTING DIMENSIONS ARE BASED ON LEVEL FINISHED SURFACE.

CONCRETE REQUIRED
 0.12 CUBIC YARDS
 [0.09 CUBIC METERS]

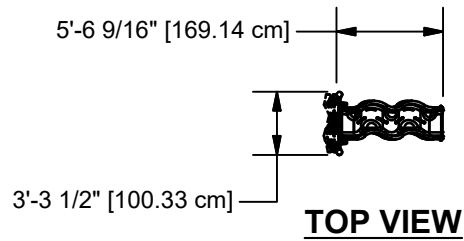




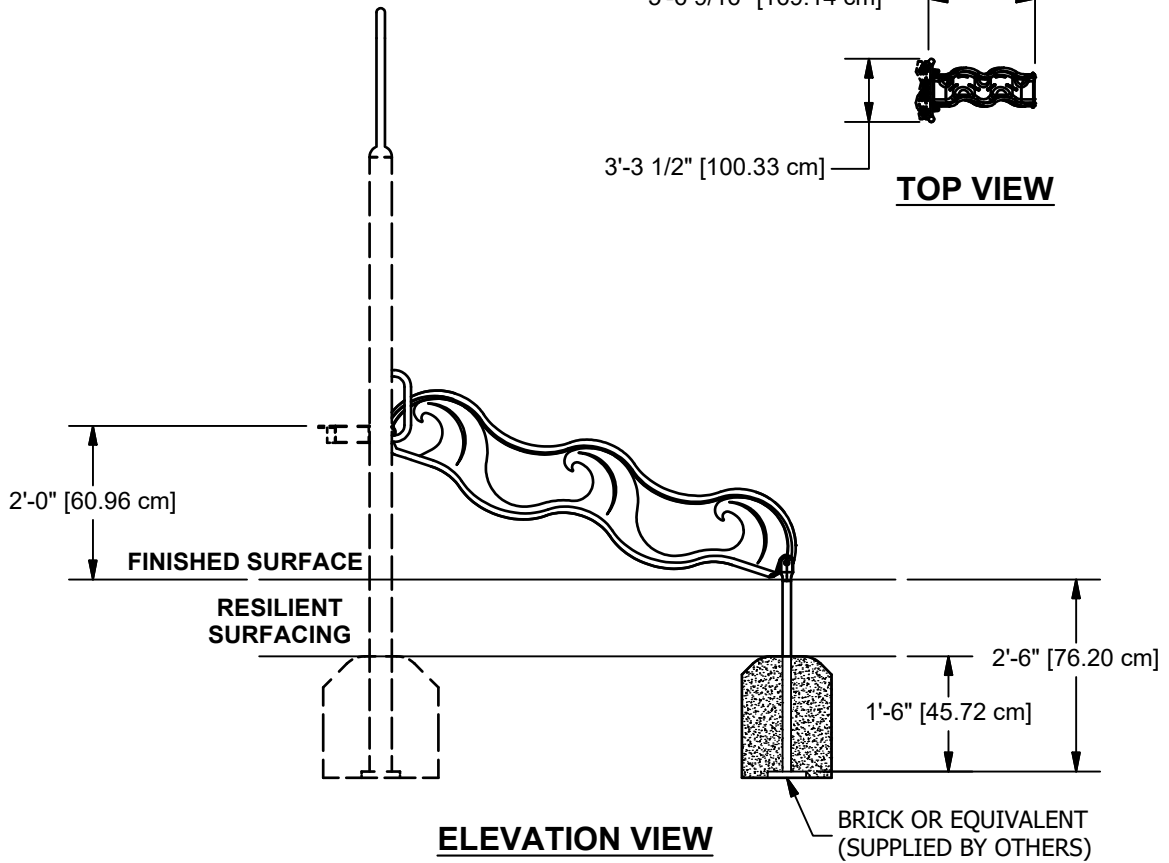
PLAN VIEW

NOTE: HOLE DEPTHS INDICATED ON ALL PLAN VIEWS ARE MEASURED FROM THE FINISHED SURFACE. SEE ELEVATION VIEW. ALL FOOTING DIMENSIONS ARE BASED ON LEVEL FINISHED SURFACE.

CONCRETE REQUIRED
 0.12 CUBIC YARDS
 [0.09 CUBIC METERS]

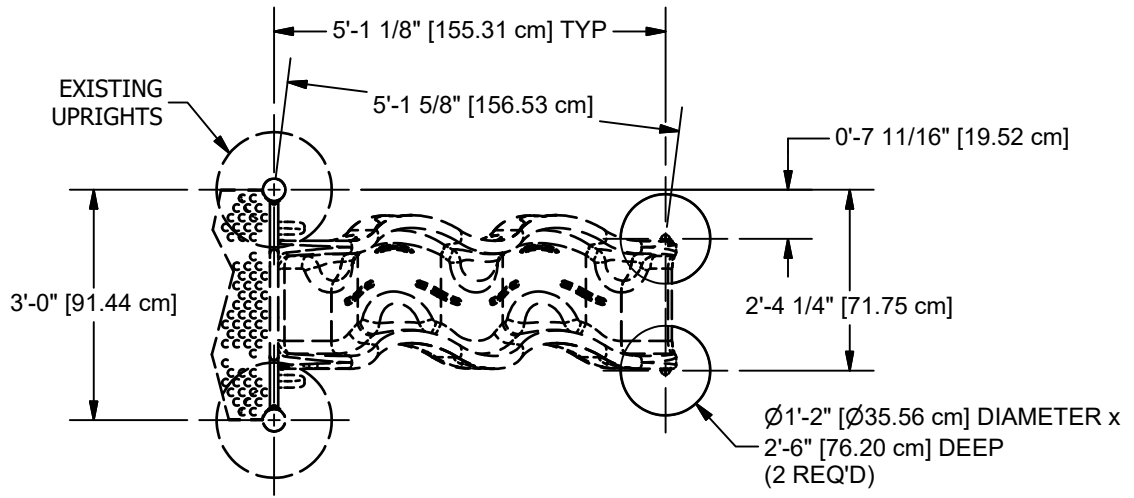


TOP VIEW



ELEVATION VIEW

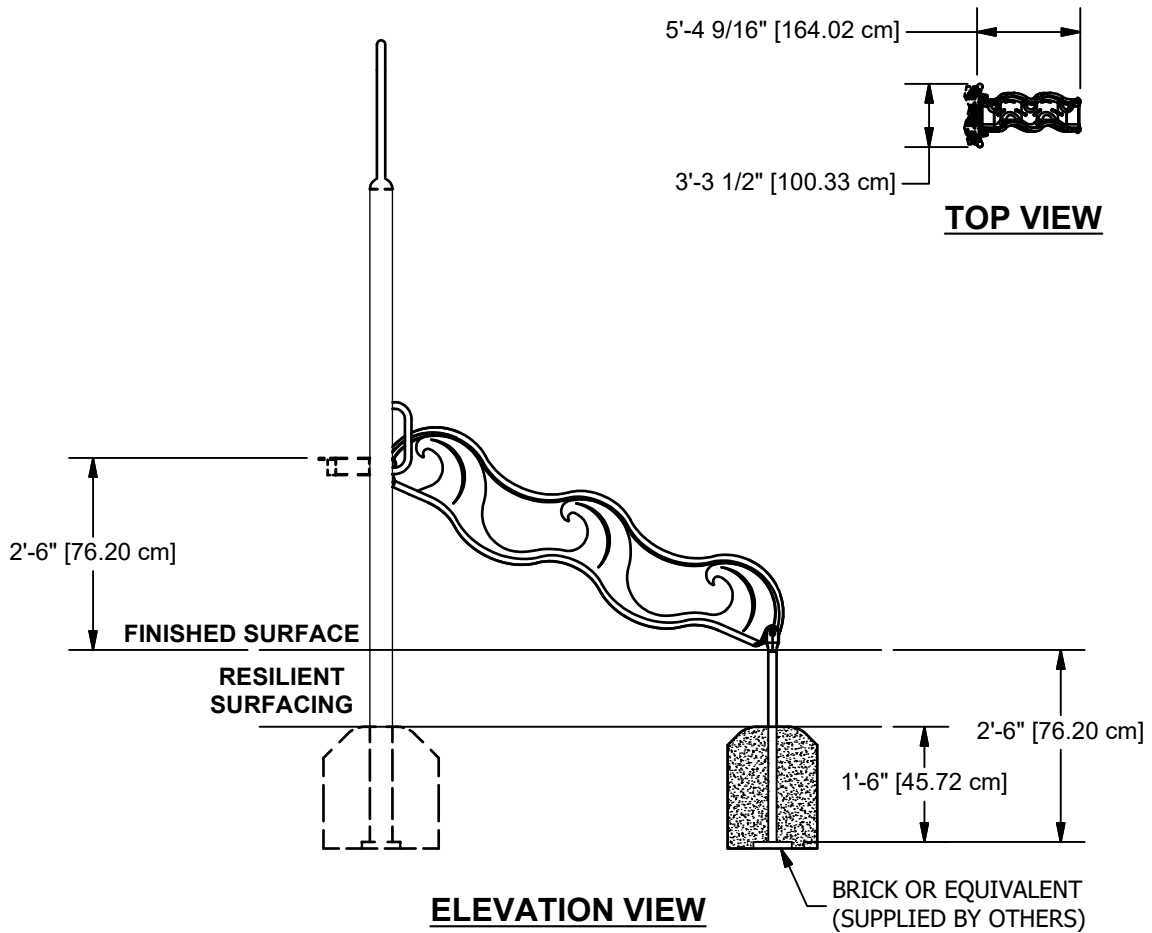
BRICK OR EQUIVALENT
 (SUPPLIED BY OTHERS)



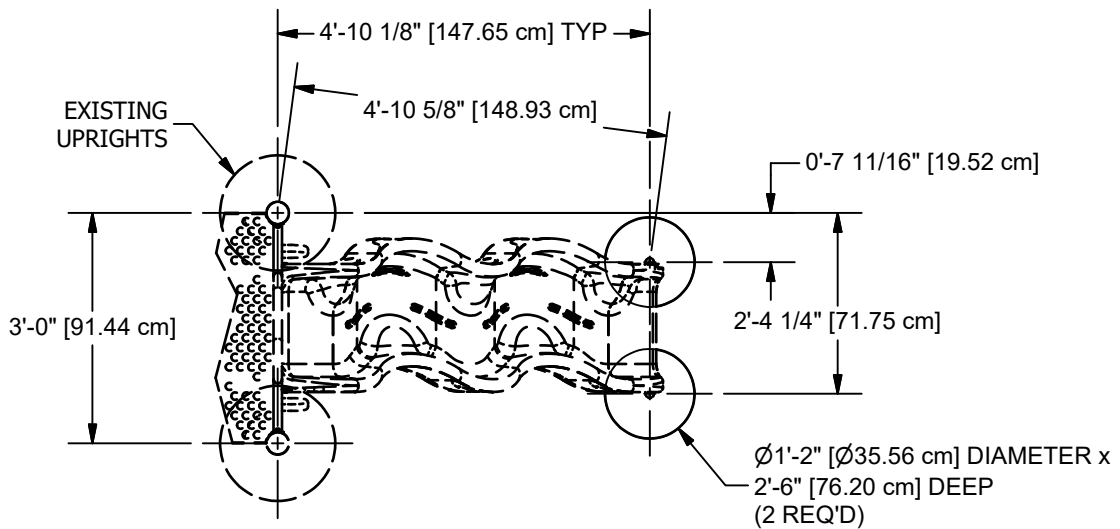
PLAN VIEW

NOTE: HOLE DEPTHS INDICATED ON ALL PLAN VIEWS ARE MEASURED FROM THE FINISHED SURFACE. SEE ELEVATION VIEW. ALL FOOTING DIMENSIONS ARE BASED ON LEVEL FINISHED SURFACE.

CONCRETE REQUIRED
 0.12 CUBIC YARDS
 [0.09 CUBIC METERS]



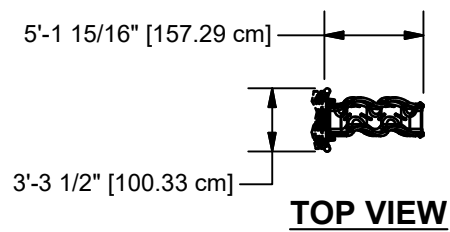
ELEVATION VIEW



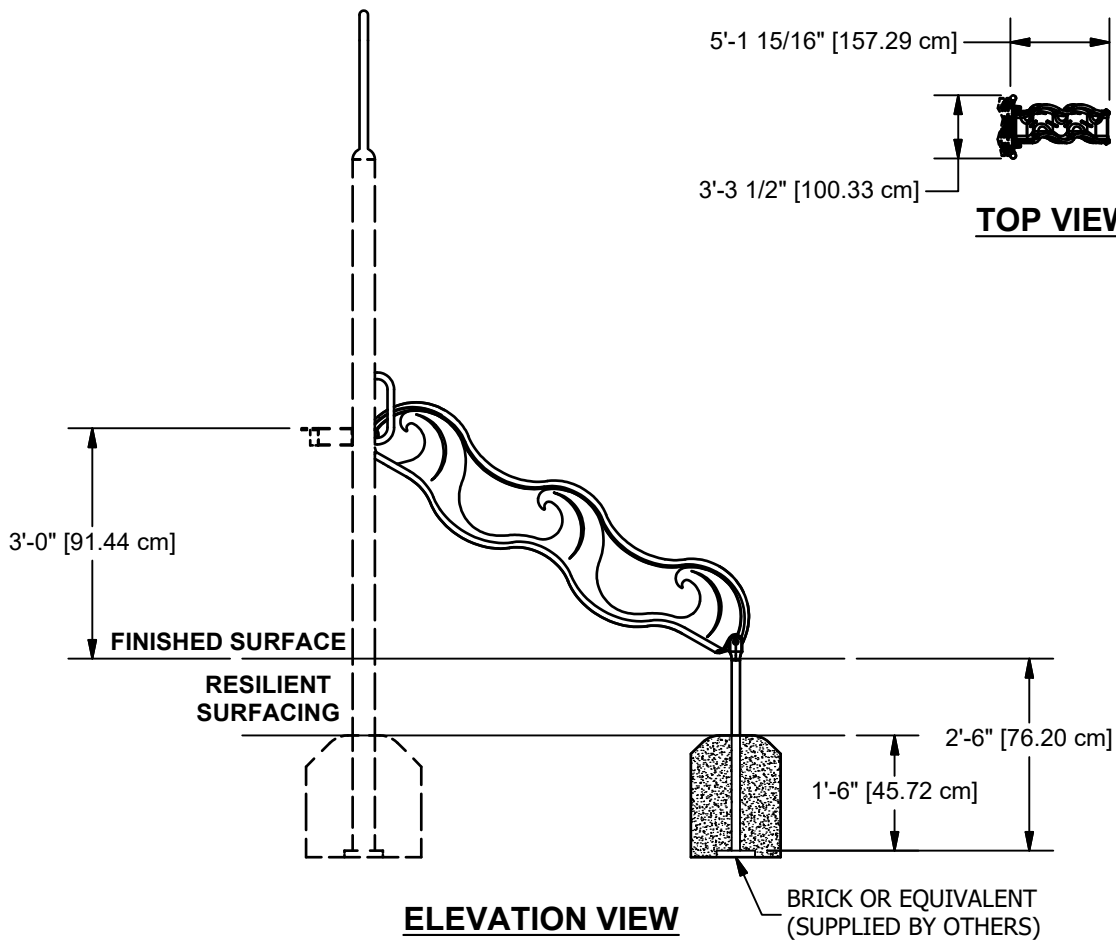
PLAN VIEW

NOTE: HOLE DEPTHS INDICATED ON ALL PLAN VIEWS ARE MEASURED FROM THE FINISHED SURFACE. SEE ELEVATION VIEW. ALL FOOTING DIMENSIONS ARE BASED ON LEVEL FINISHED SURFACE.

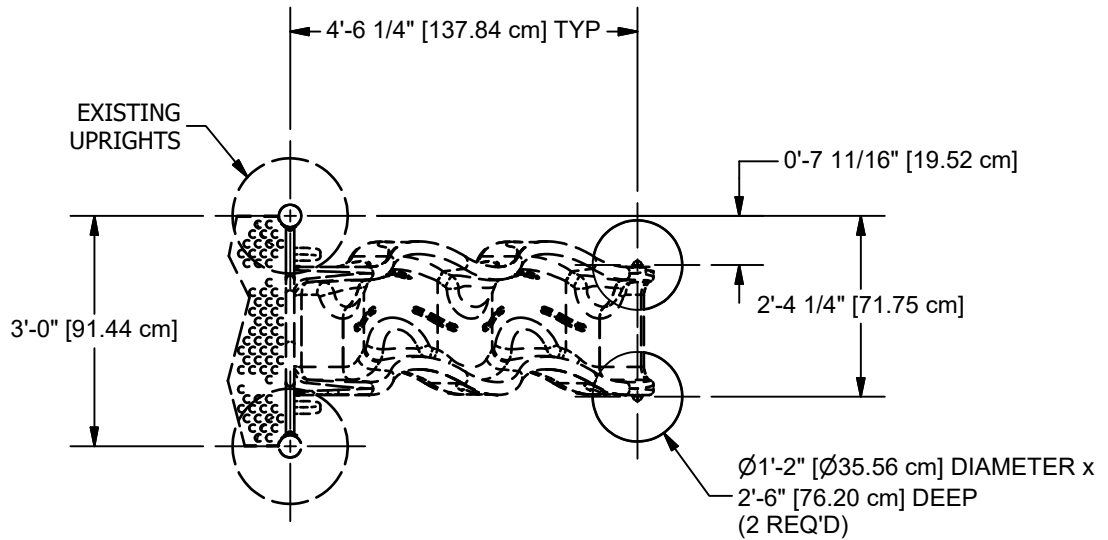
CONCRETE REQUIRED
 0.12 CUBIC YARDS
 [0.09 CUBIC METERS]



TOP VIEW



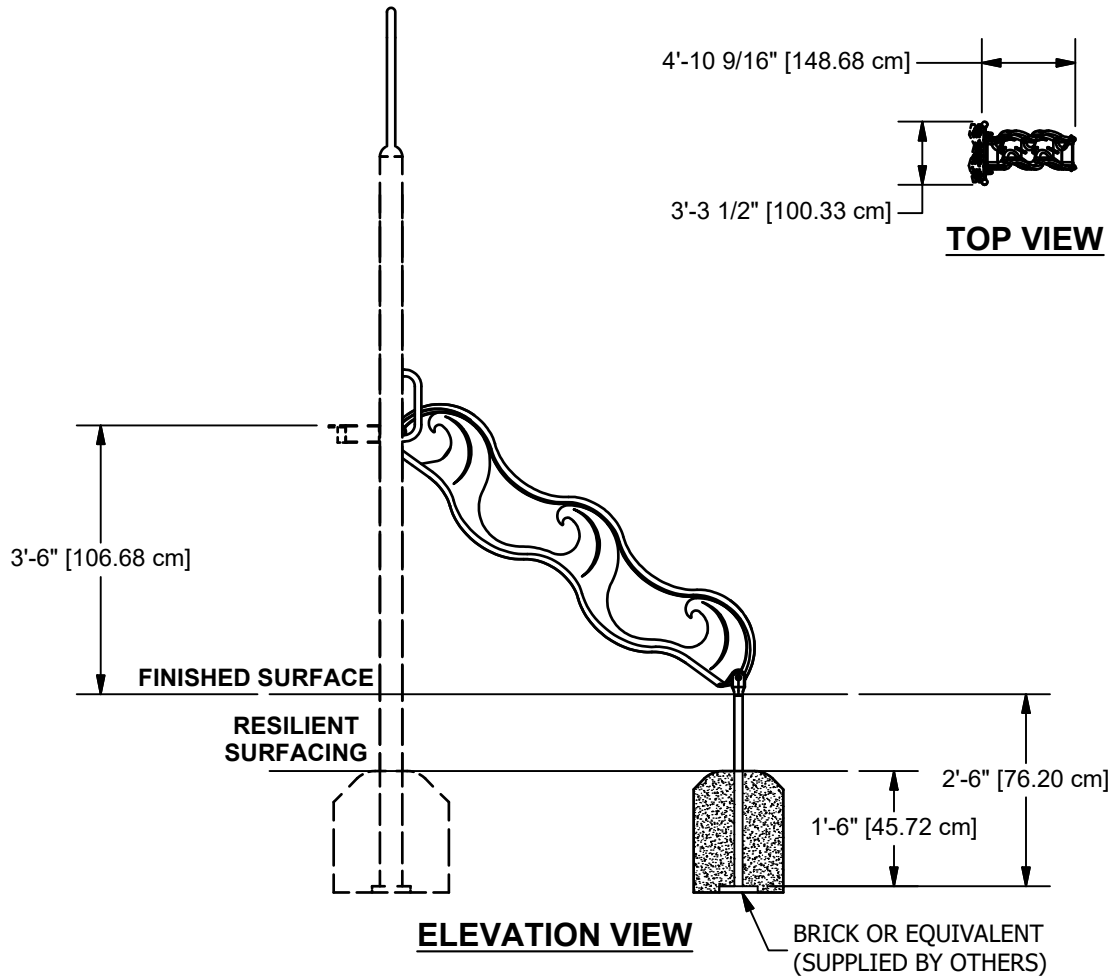
ELEVATION VIEW



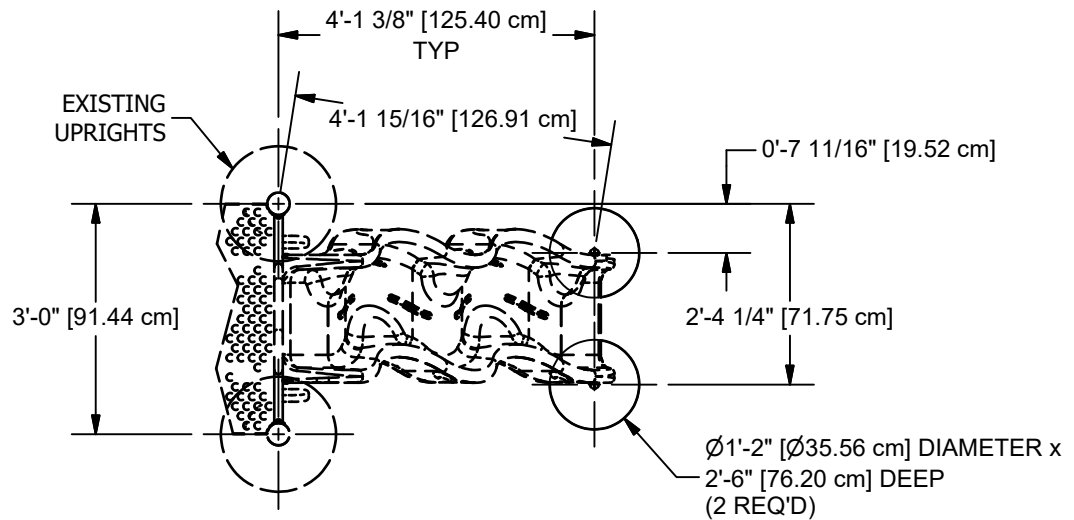
PLAN VIEW

NOTE: HOLE DEPTHS INDICATED ON ALL PLAN VIEWS ARE MEASURED FROM THE FINISHED SURFACE. SEE ELEVATION VIEW. ALL FOOTING DIMENSIONS ARE BASED ON LEVEL FINISHED SURFACE.

CONCRETE REQUIRED
 0.12 CUBIC YARDS
 [0.09 CUBIC METERS]



ELEVATION VIEW

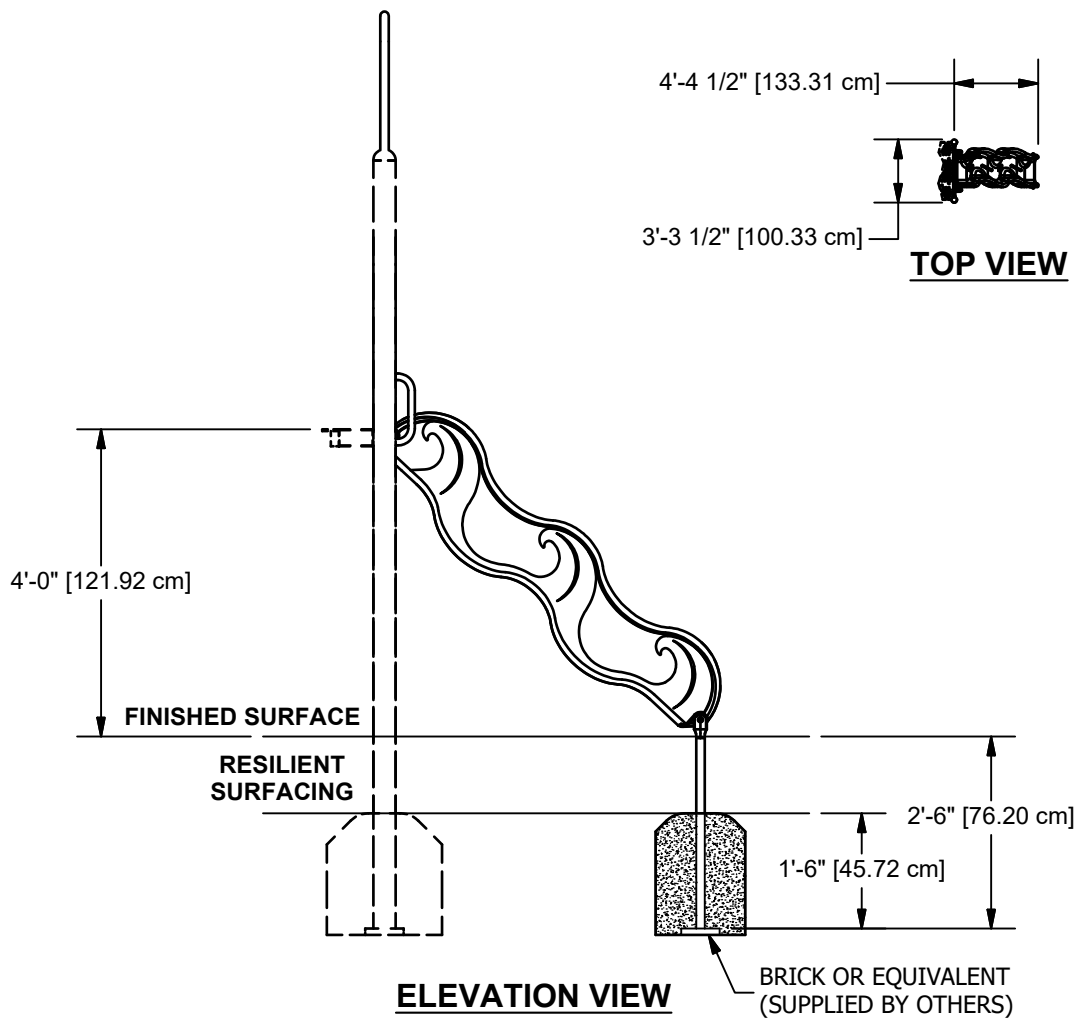


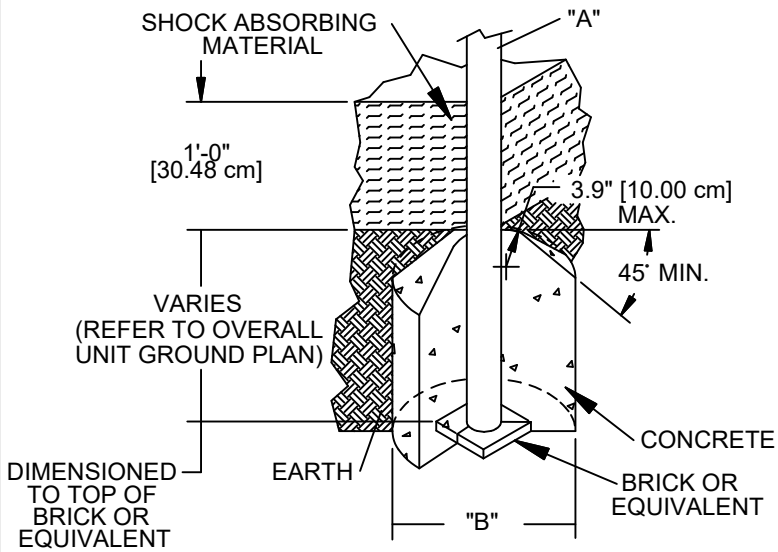
PLAN VIEW

NOTE: HOLE DEPTHS INDICATED ON ALL PLAN VIEWS ARE MEASURED FROM THE FINISHED SURFACE. SEE ELEVATION VIEW. ALL FOOTING DIMENSIONS ARE BASED ON LEVEL FINISHED SURFACE.

CONCRETE REQUIRED

0.12 CUBIC YARDS
[0.09 CUBIC METERS]





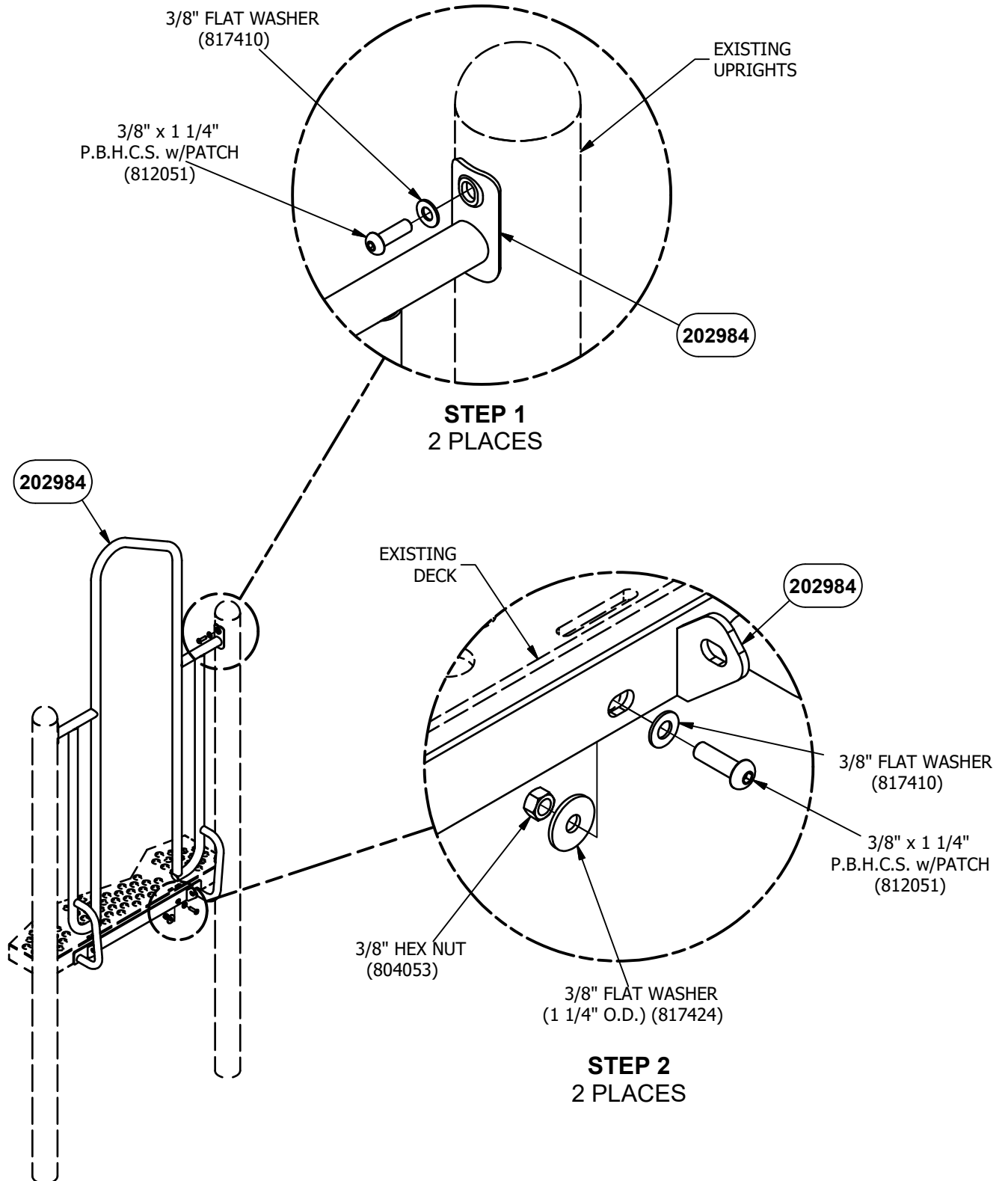
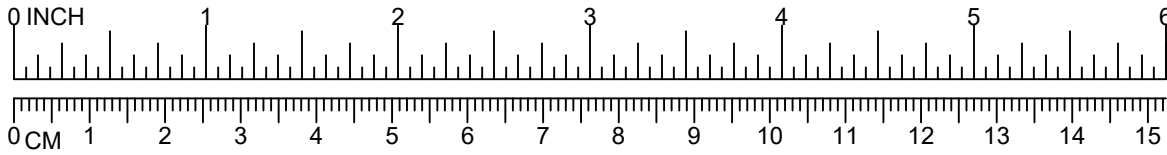
DIA. "A" (PIPE SIZE)	DIA. "B" (FOOTING SIZE)
1 1/16" [2.70 cm]	1'-2" [35.56 cm]
1 5/16" [3.33 cm]	1'-2" [35.56 cm]
1 5/8" [4.13 cm]	1'-2" [35.56 cm]
1 7/8" [4.83 cm]	1'-2" [35.56 cm]
2 3/8" [6.03 cm]	1'-2" [35.56 cm]
3 1/2" [8.89 cm]	1'-6" [45.72 cm]
5" [12.70 cm]	1'-6" [45.72 cm]

NOTES:

- SLOPED FOOTING IS A REQUIREMENT OF EUROPEAN STANDARD EN1176-1 ONLY
- SUGGESTED MINIMUM CONCRETE RATING: 3000 PSI

SHOCK ABSORBING PROPERTIES OF SURFACING MATERIALS VARY. IF YOU DETERMINE THAT LESS THAN 1'-0" [30.48cm] OF SURFACING IS REQUIRED, MAKE UP THE DIFFERENCE IN ELEVATION WITH EARTH, BEFORE APPLYING SURFACING.

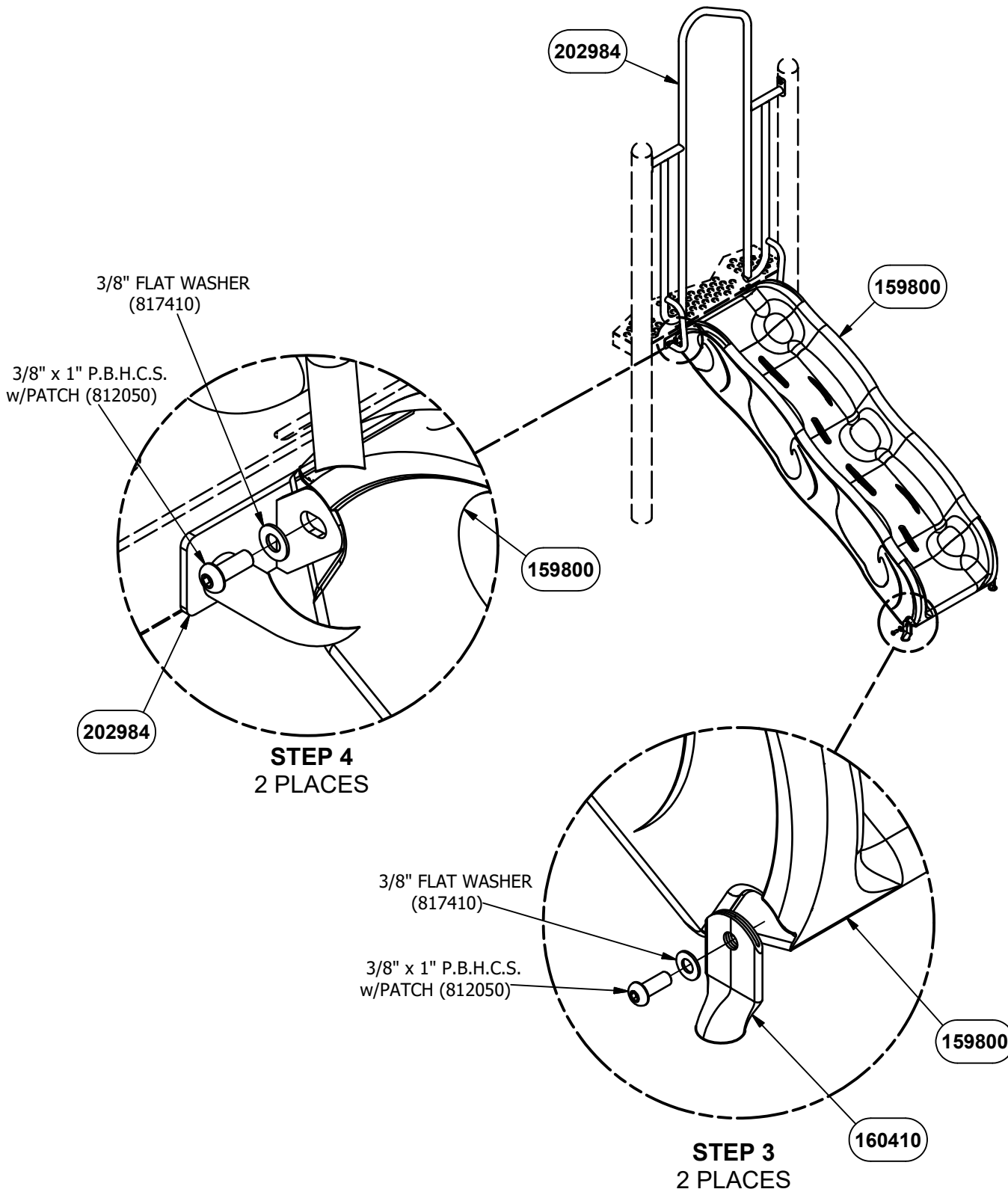
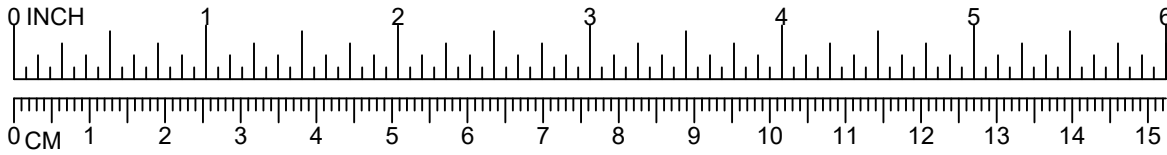
FOOTING DETAIL



NOTE: DO NOT POUR CONCRETE UNTIL ENTIRE STRUCTURE IS COMPLETELY ASSEMBLED AND LEVEL.

DETAIL VIEW

PAGE 9



NOTE: DO NOT POUR CONCRETE UNTIL ENTIRE STRUCTURE IS COMPLETELY ASSEMBLED AND LEVEL.

DETAIL VIEW

PAGE 10

Parts List		
DESCRIPTION	QTY	PART NUMBER
ARCHWAY WELD ASSEMBLY	1	202984
SMASHED FOOTBUCK	2	160410
WAVE CLIMBER	1	159800
HARDWARE COMPLETE	1	160413
3/8" x 1" P.B.H.C.S. w/PATCH	4	812050*
3/8" x 1 1/4" P.B.H.C.S. w/PATCH	4	812051*
3/8" FLAT WASHER	8	817410*
3/8" FLAT WASHER (1 1/4" O.D.)	2	817424*
3/8" HEX NUT	2	804053*

*Unless Otherwise Specified, All Units of Measure are Each
* Included in Hardware*

Warning: During Installation, Hardware And Small Parts Are Choking Hazards For Young Children. Store Unused Parts Appropriately Until Assembly Is Completed. Once Assembly Is Completed, Remove Any Unused Parts From The Play Environment And Dispose/Save Them In A Secure Location.

Note: Peen Tee-Nuts and Flatwashers to match radius of pipe after assembly is complete.

Note: Loctite (supplied by others) should be used on any non-patch hardware.

To reduce the risk of clothing entanglement in compliance with ASTM F1487, any bolt end protruding more than two full threads beyond the face of the nut shall be cut-off flush, filed smooth and treated to prevent corrosion.

MAINTENANCE PROCEDURE:

- Periodically check hardware for tightness, and tighten as necessary.
- Always check all parts for breakage or wear, and immediately put equipment out of service until any faulty parts found are repaired or replaced.
- Check all metal parts for rust, paint loss and touch-up if necessary with paint.
- Check for welded areas and verify integrity.
- Check periodically resilient surfacing for appropriate depth and remove extraneous materials that could cause injury, infection, or disease.
- Maintain detailed installation, inspection, maintenance, and repair records for each public-use playground equipment.



GameTime
 c/o Dominica Recreation Products, Inc.
 P.O. Box 520700
 Longwood, FL 32752-0700
 800-432-0162 * 407-331-0101
 Fax: 407-331-4720
www.playdrp.com

11/24/2025
 Quote #
 108915-01-01

Palmetto Park Rpl Slides GT#3135042 (2003)

City of Flagler Beach
 Attn: Tim Davis
 108 N. Palmetto Ave
 Flagler Beach, FL 32136
 United States
 jabco222@gmail.com

Ship to Zip 32136

Quantity	Part #	Description	Unit Price	Amount
1	176188	GameTime - 4'Double Zip Slide <i>Custom - [Roto Plastic: (BL) Blue]</i>	\$2,377.00	\$2,377.00
1	176177	GameTime - Double Primetime Hood <i>Custom - [Roto Plastic: (BL) Blue]</i>	\$870.00	\$870.00
2	176385	GameTime - Footbuck Assy 32 1/8"Lg <i>Custom - [Roto Plastic: (BL) Blue]</i>	\$215.00	\$430.00
2	169926	GameTime - Formed Tab <i>Custom - [Basic: (BL) Blue]</i>	\$28.65	\$57.30
1	176405	GameTime - Hdw-Double Zip Slide	\$46.28	\$46.28
4	804710	GameTime - 3/8" 16 Unc Thread Insert	\$1.83	\$7.32
1	818312	GameTime - 3/8"-16 Placing Tool	\$73.83	\$73.83
1	159800	GameTime - Wave Climber <i>Custom - [Roto Plastic: (BL) Blue]</i>	\$921.00	\$921.00
2	160413	GameTime - Hdw Comp Wave Climber	\$35.27	\$70.54
1	812655	GameTime - 3/8"Pin-In Torx Bit(7/32)	\$3.21	\$3.21
Contract: OMNIA #2017001134			Sub Total	\$4,856.48
			Discount	(\$437.06)
			Freight	\$590.34
			Total	\$5,009.76

This quote was prepared by Laura Johnson, Customer Service.
 For questions or to order please call - 800-432-0162 ext. 102 Laura.johnson@gametime.com

All pricing in accordance with Omnia Partners / U.S. Communities Contract #2017001134.

All terms in the Omnia Partners / U.S. Communities Contract take precedence over terms shown below.
 For more information on the Omnia Partners / U.S. Communities contract please visit [Omnia Partners Public Sector GameTime](#)

Payment Terms: Governmental Purchase Order.

Purchases in excess of \$1,000.00 to be supported by your written purchase order made out to GameTime.

Net 30 days subject to approval by GameTime Credit Manager. A completed Credit Application and Bank Reference Authorization, must be received with the order. The decision on credit is the sole discretion of GameTime/PlayCore. A 1.5% per month finance charge will be imposed on all past due accounts.

Multiple Invoices: Invoices will be generated upon services rendered. When equipment ships it will be invoiced seperately from installation and/or other services. Terms are Net 30 for each individual invoice.

This Quotation is subject to policies in the current GameTime Park and Playground Catalog and the following terms and conditions. Our quotation is based on shipment of all items at one time to a single destination, unless noted, and changes are subject to price adjustment.

Pricing: Firm for 60 days from date of quotation.

Shipment: F.O.B. factory, order shall ship within 120 days after GameTime's receipt and acceptance of your purchase order, color selections, approved submittals, and receipt of payment.

Taxes: State and local taxes will be added at time of invoicing, if not already included, unless a tax exempt certificate is provided at the time of order entry.

Exclusions: Unless specifically discussed, this quotation excludes all sitework and landscaping; removal of existing equipment; acceptance of equipment and off-loading; lift gate delivery; storage of goods prior to installation; security of equipment (on site and at night); equipment assembly and installation; safety surfacing; borders; drainage; signed/sealed drawings; or permits.



GameTime
 c/o Dominica Recreation Products, Inc.
 P.O. Box 520700
 Longwood, FL 32752-0700
 800-432-0162 * 407-331-0101
 Fax: 407-331-4720
www.playdrp.com

11/24/2025
 Quote #
 108915-01-01

Palmetto Park Rpl Slides GT#3135042 (2003)

ORDER INFORMATION

Bill To: _____ Ship To: _____

Contact: _____ Contact: _____

Address: _____ Address: _____

Address: _____ Address: _____

City, State, Zip: _____ City, State, Zip: _____

Tel: _____ Fax: _____ Tel: _____ Fax: _____

SALES TAX EXEMPTION CERTIFICATE #: _____ (PLEASE PROVIDE A COPY OF CERTIFICATE)

Acceptance of quotation:

Accepted By (printed): _____ P.O. No: _____

Signature: _____ Date: _____

Title: _____ Phone: _____

E-Mail: _____ Purchase Amount: **\$5,009.76**



Staff Report

Parks Committee Regular Meeting

January 7, 2026



To: Parks Committee
From: Colleen Kuhn, Deputy City Clerk
Meeting Date: January 7, 2026
Item Name: Custer Park Swing Set - John Timmins

Background:

John Timmins visited Custer Park and provided recommendations and photos.

Fiscal Impact:

Staff Recommendation:

Review and discuss.

Attachments:

1. Custer Park Notes from John Timmins

John Timmins visited Custer Park at 220 Palm Drive on Dec. 20th, 2025. His observations are as follows:

1. There is a monument rock with a plaque that needs to be straightened up.
2. One or more park benches should be added.
3. The swings need attention, and worn parts should be replaced sooner than later.

A. The park has a rock with a bronze dedication plaque, and the rock is leaning and needs propping up.

B. The idea for more Custer Park seating came about after dozens of complaints about the recent Palm Coast Christmas Boat Parade were posted online. Apparently boat owners felt the Palm Coast city management screwed up a good parade by getting involved; it was drastically smaller this year. Exact details aren't Flagler Beach business, but it could make the Flagler Beach Christmas Boat Parade even larger in future years which should be encouraged! Custer Park, sitting under the bridge, and the Flagler Beach boat ramp area fishing dock are among the few places to see the parade that aren't private property.

C. Because parts are getting worn on the swing set, I strongly suggest the swings be replaced with new swing brackets, chains and seats. Let me clarify that the *frame* of the swing set is not the issue. The pipes that go up from the ground and the horizontal pipe from which the swing's chains hang are all fine

. It's the swinging parts and the chains and seats I want to focus on. These pictures will help explain the problem.

Picture #1 is a swing set part called a *swing bracket*. They are offered in two sizes depending on the diameter of the horizontal pipe – 4 inches or 2 3/8 inches. The clamp end comes apart into two halves, and they are reassembled around the horizontal pipe. The “clevis end” of the bracket is where the chain hangs from. The swing bracket size needed on the Custer Park swing set is the 2 and 3/8 inch size. The existing swing brackets are heavily worn.

Pictures #2, #3, and #4. These show the seats and the plastic-coated chain. I would suggest that one of the swings be for an infant with the other one being a regular flat seat for all ages.

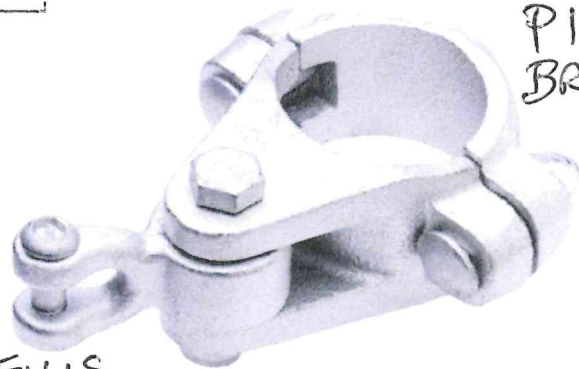
The new swings, chains, and brackets in N. Palmetto Park are from this company for a reference.

Cost to replace needed swing stuff in Custer Park:

4 Swing Brackets	4 x \$39.99ea. =	\$135.96
Flat swing with chains		\$134.99
Half bucket swing seat with chains		<u>\$123.99</u>
	<u>Total</u>	\$394.94
With the full bucket swing instead:	<u>Total</u>	\$423.94
(My wife said the full bucket is best.)		

.....

PICTURE 1



PIPE
BRACKET

CLEVIS
STYLE

Galvanized Ductile Iron Pipe Beam Swing Hanger

★★★★★ 93 reviews

Playset Par

SKU: SH-23

\$30.99

Usually Ships Between 2-3 Days

FREE SHIPPING on orders over \$119! See details

Pipe Diameter: = 2 3/8" DIAMETER
2-3/8"

Pendulum:
Clevis CLEVIS STYLE

Quantity:

1

Add To Cart

Fast & Free Shipping

30 Day Money Back Guarantee

110% Low Price Guarantee

Description

MYSTERY OFFER



PICTURE 2

CHAIN COLOR CHOICES:

BLUE
GREEN
YELLOW

SEAT COLOR CHOICES ARE: —
BLUE OR GREEN



Molded Flat Swing Seat with 8'6" Plastisol Chain

★★★★★ 24 reviews

SKU: S-174

~~\$159.00~~ **\$134.99** (You save \$24.01)

Usually Ships Between 2-3 Days

FREE SHIPPING on orders over \$119! [See details](#)

Swing Color:

-- Please Choose an Option --

Chain Color:

-- Please Choose an Option --

Quantity:

1

Add To Cart

Fast & Free Shipping

30 Day Money Back Guarantee

110% Low Price Guarantee

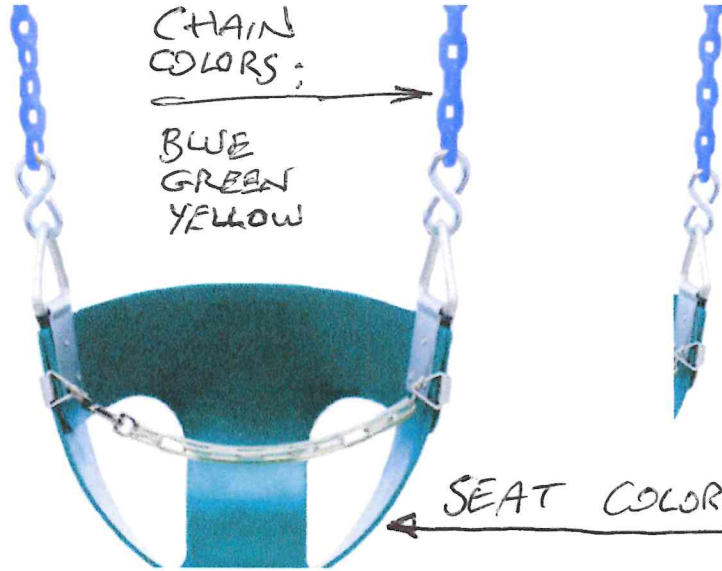
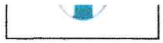
Description

MYSTERY OFFER

Playset Par



PICTURE 3



CHAIN
COLORS:
BLUE
GREEN
YELLOW

SEAT COLORS

RED
BLUE
GREEN
YELLOW
BLACK

Commercial Half Bucket Swing Seat with 8'6" Plastisol Chain



Playset Par

SKU: S-144

~~\$145.00~~ **\$123.99** (You save \$21.01)

Usually Ships Between 2-3 Days

FREE SHIPPING on orders over \$119! See details

Swing Color:

-- Please Choose an Option --

Chain Color:

-- Please Choose an Option --

Quantity:

1

Add To Cart



Fast & Free
Shipping



30 Day Money Back
Guarantee



110% Low
Price
Guarantee

Description

MYSTERY OFFER



PICTURE 4

CHAIN COLORS:

BLUE
GREEN
YELLOW

SWING COLORS:

RED
BLUE
GREEN
YELLOW
BLACK



Commercial Full Bucket Swing Seat with 8'6" Plastisol Chain

★★★★★ 12 reviews

Playset Par

SKU: S-274

~~\$179.00~~ **\$152.99** (You save \$26.01)

Usually Ships Between 2-3 Days

FREE SHIPPING on orders over \$119! See details

Swing Color:

-- Please Choose an Option --

Chain Color:

-- Please Choose an Option --

Quantity:

1

Add To Cart

MY WIFE SAID THIS
IS THE BEST CHOICE
FOR A CHILD SWING



Fast & Free
Shipping



30 Day Money Back
Guarantee



110% Low
Price
Guarantee

Description

MYSTERY OFFER

